

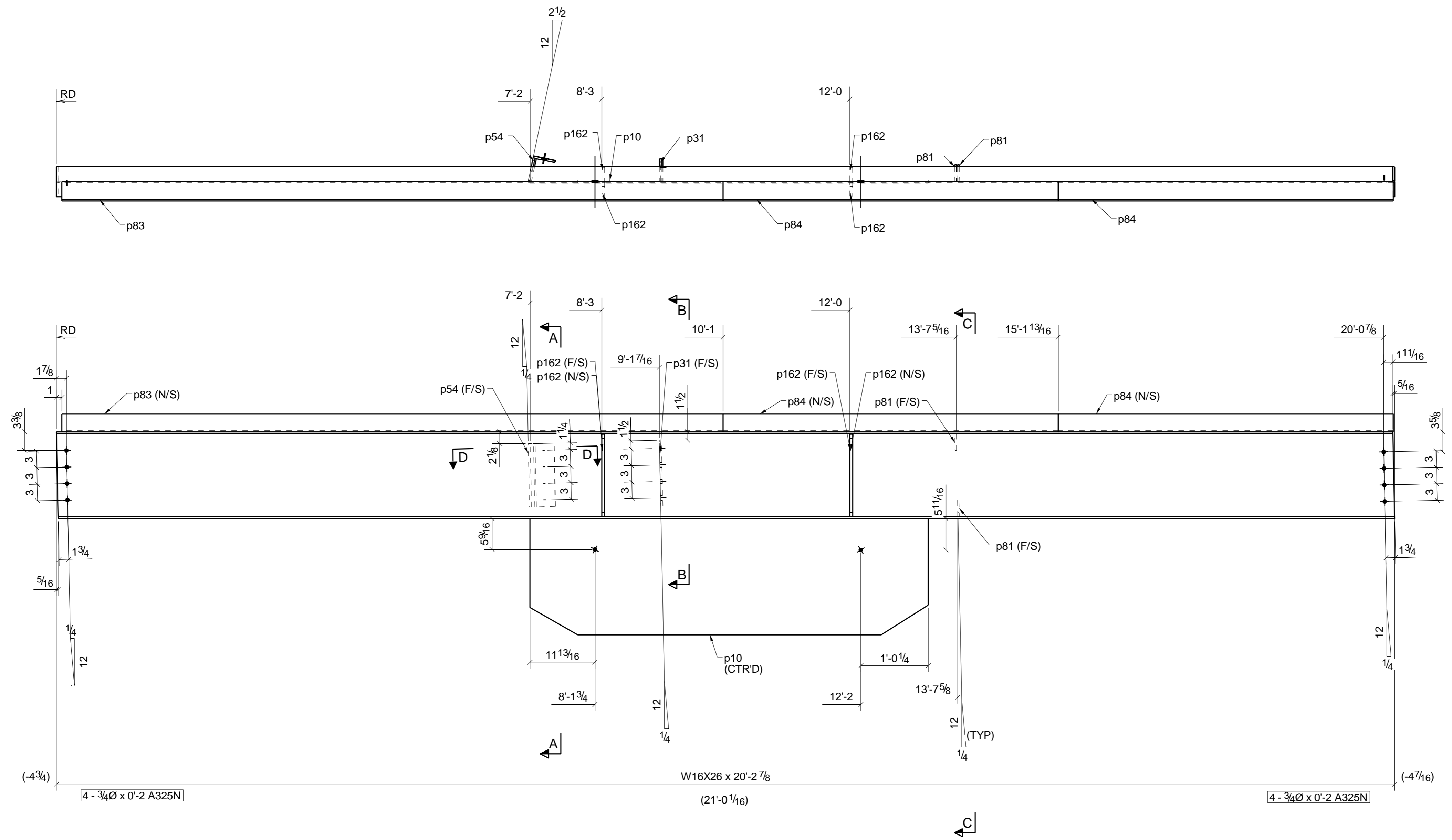
GRID LOCATION
8/C-D

BILL OF MATERIAL

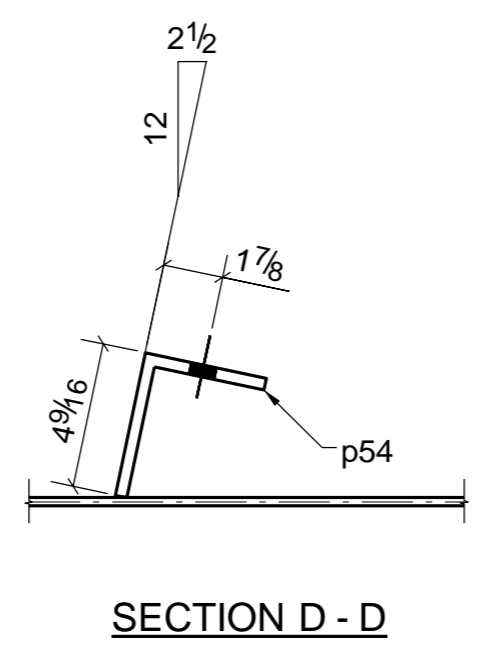
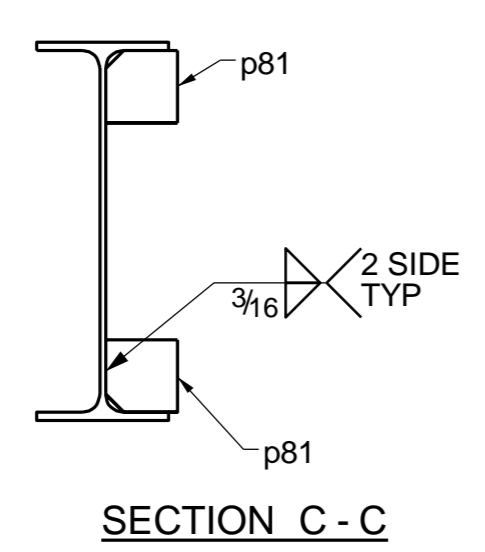
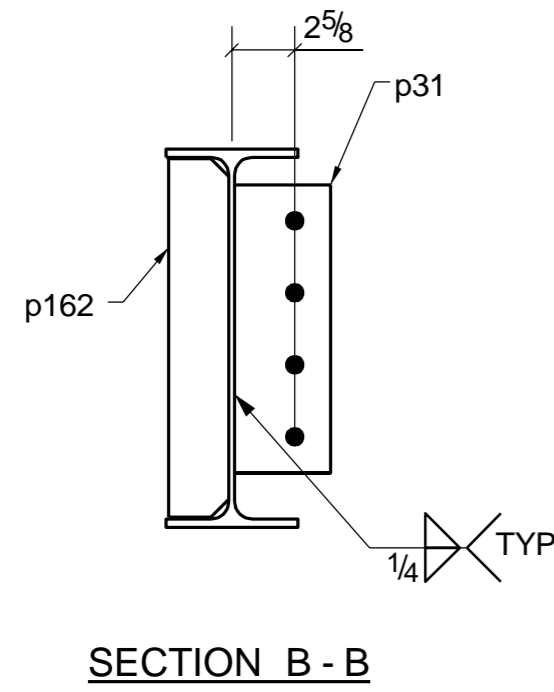
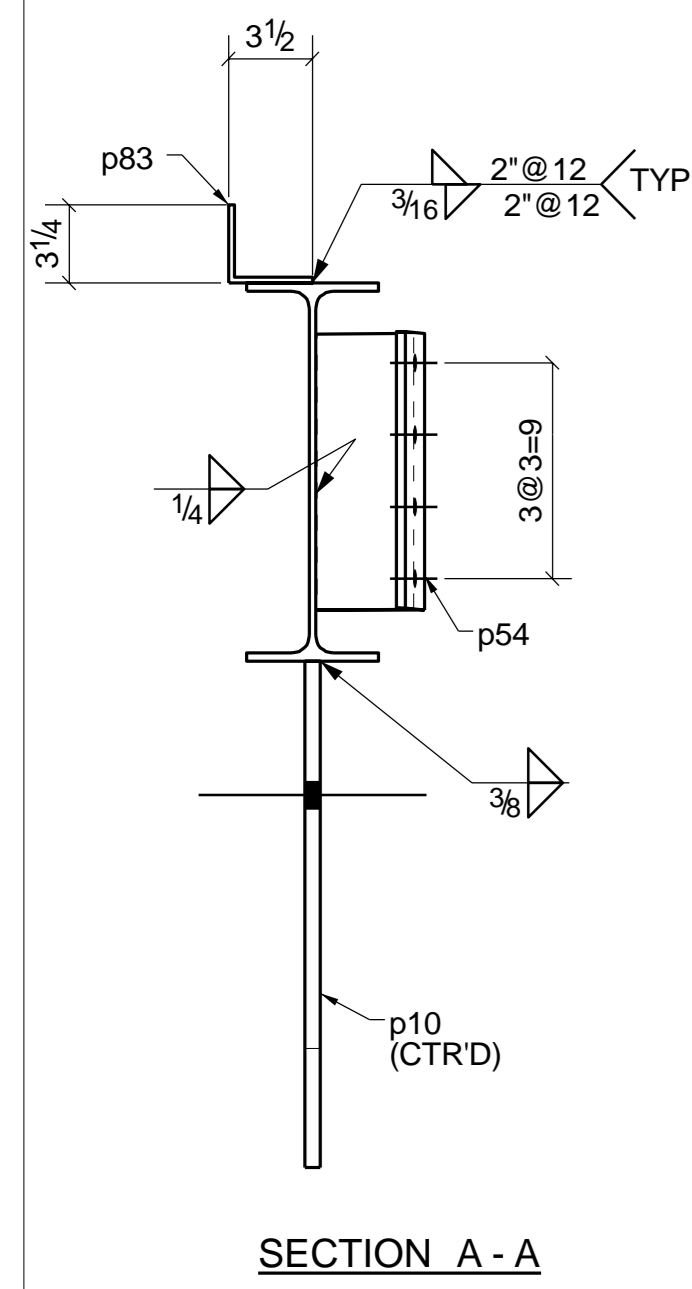
| SHIP MARK | PIECE MARK | QTY | DESCRIPTION | LENGTH | REMARKS |
|-----------|------------|-----|-----------------|-------------|---------|
| B118 | | 1 | BEAM | | |
| | B118 | 1 | W16X26 | 20'-2 7/8" | |
| | p10 | 1 | PL5/8"X21 1/16" | 6'-0 1/4" | |
| | p31 | 1 | PL3/8"X4" | 1'-0" | |
| | p54 | 1 | PL3/8"X7 11/16" | 0'-11 1/2" | (BENT) |
| | p81 | 2 | PL1/4"X3" | 0'-3" | |
| | p83 | 1 | PL1/4"X6 1/4" | 10'-0" | (BENT) |
| | p84 | 2 | PL1/4"X6 1/4" | 5'-0 13/16" | (BENT) |
| | p162 | 4 | PL1/2"X2 1/2" | 1'-2 15/16" | |

FIELD BOLTS

| QTY | DESCRIPTION | LENGTH | REMARKS |
|-----|--------------------|--------|----------------|
| 8 | 3/4" Ø A325N BOLTS | 0'-2" | w/NUT & WASHER |



SHOP NOTES:-
 1. NO PAINT 3 AROUND HOLES
 2. NO PAINT AT UNCAPED & CHANNEL & HSS
 3. NO PAINT AT END OF MOMENT PREP.
 4. N.P. INDICATE NO PAINT AREA.
 5. HATCH INDICATE NO PAINT AREA.



FOR FABRICATION

SHOP NOTES

| | | |
|--------------------|------------------------|--------|
| REF. DRAWINGS: E2 | All Pipe: A53 GR-B | U.N.O. |
| All Material: A36 | All Rebar: A706 | U.N.O. |
| All W-Flange: A992 | All Headed Studs: A108 | U.N.O. |
| All TS: A500 GR-B | Welds: E70XX | U.N.O. |

| BLUE PRINTS | | BLUE PRINTS | | BLUE PRINTS | |
|-------------|------|-------------|-----|-------------|-----|
| NO. | DATE | FOR | NO. | DATE | FOR |
| | | | | | |

| NO. | DESCRIPTION | DATE |
|-----|-----------------|------|
| 1 | For Fabrication | |

APPROVAL/REVIEW AUTHORITY:
 PLEASE REVIEW THIS DRAWING CAREFULLY IT REPRESENT OUR INTERPRETATION OF THE INTENT OF THE CONTRACT DOCUMENTS, HOWEVER, THE STEEL FABRICATOR AND THE STRUCTURAL DETAILER ASSUMES NO RESPONSIBILITY FOR THE ACCURACY OF THE INFORMATION SHOWN ON THIS DRAWING. THIS IS THE RESPONSIBILITY OF THE BUYER.
 UNLESS NOTED TO THE CONTRARY ON THIS DRAWING WHEN IT IS RETURNED FROM APPROVAL, IT WILL BE ASSUMED THAT ALL INFORMATION SHOWN HEREIN HAS THE AFFIRMATION OF APPROVAL AUTHORITY.
 SUBSEQUENT CHANGED INFORMATION SHOWN ON THESE DRAWINGS AFTER FIRST SUBMISSION WILL BE CONSIDERED AS CONTRACT CHANGES.
 ADOPTED BY THE AMERICAN INSTITUTE OF STEEL CONSTRUCTION.

| | | | |
|----------|------------------------------------|----------------|-----------|
| ITEM | BEAM | DRAWN BY: JKV | |
| JOB | NORMS RESTAURANTS, LLC | DATE | |
| LOCATION | 17904 LAKEWOOD BLVD BELLFLOWER, CA | CHECKD BY: JKS | |
| ARCH. | GEOFFREY B. LIM | DATE 06/16/17 | |
| CONTR. | ---- | APPROVED | |
| ENGR. | McVEIGH & MANGUM | | |
| JOB NO. | HOLE SIZE U.N. | FINISH | DRWG. NO. |
| -- | 13/16 | 1 S/C PRIM | B118 |

ONE - BEAM - B118

Telsa structures