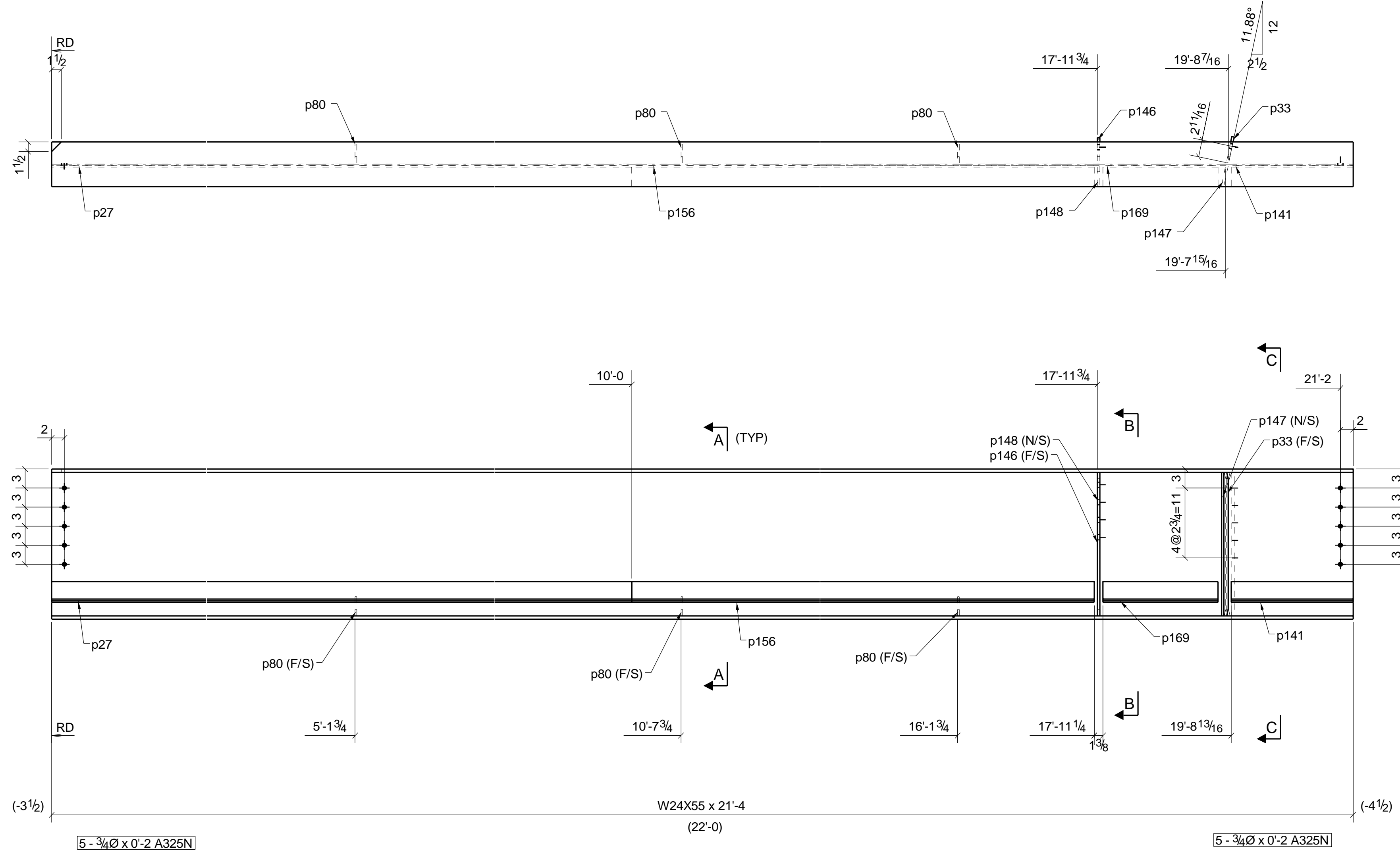
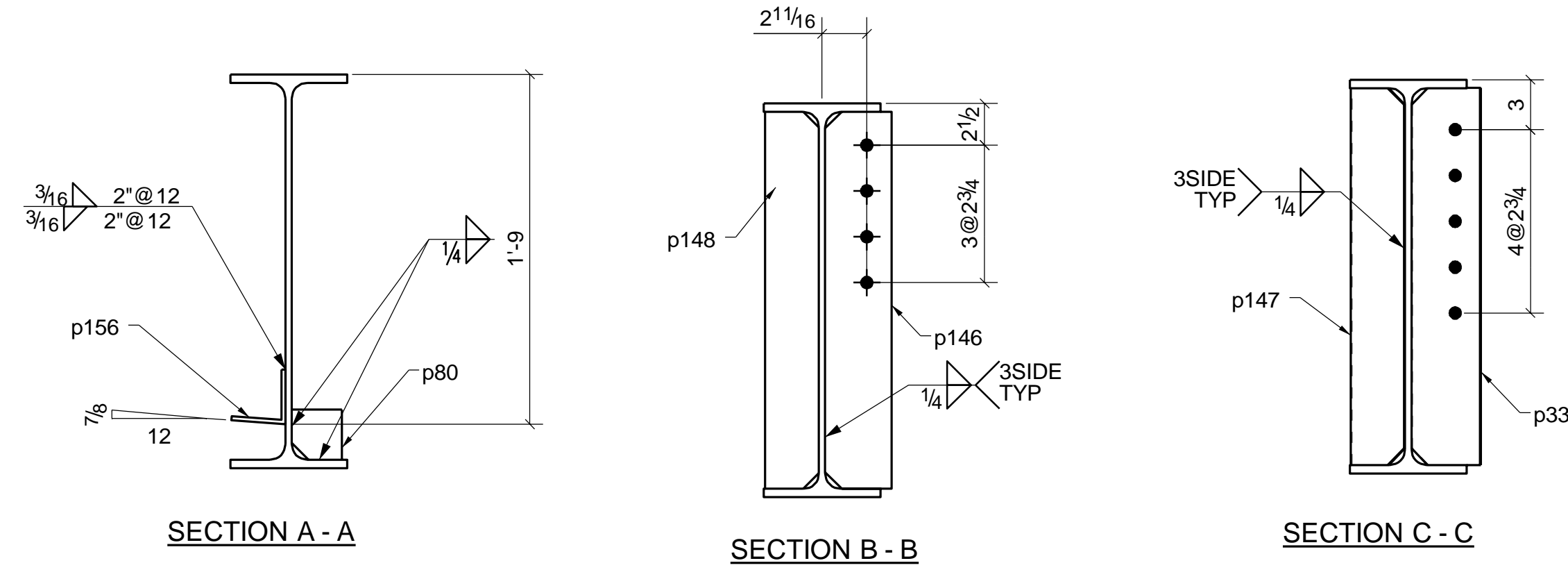


GRID LOCATION
6-7/C



SHOP NOTES:-
 1. NO PAINT 3" AROUND HOLES
 2. NO PAINT AT UNCAPEL & CHANNEL & HSS
 3. NO PAINT AT END OF MOMENT PREP.
 4. N.P. INDICATE NO PAINT AREA.
 5. HATCH INDICATE NO PAINT AREA.

BILL OF MATERIAL

SHIP MARK	PIECE MARK	QTY	DESCRIPTION	LENGTH	REMARKS
B96		1	BEAM		
	B96	1	W24X55	21'-4"	
	p27	1	PL1/4"X6"	10'-0"	(BENT)
	p33	1	PL3/8"X4 3/16"	1'-10 5/8"	
	p80	3	PL1/4"X3"	0'-3"	
	p141	1	PL1/4"X6"	1'-7 3/16"	(BENT)
	p146	1	PL3/8"X4"	1'-10 5/8"	
	p147	1	PL3/8"X3 1/4"	1'-10 5/8"	
	p148	1	PL3/8"X3 1/4"	1'-10 5/8"	
	p156	1	PL1/4"X6"	7'-11 1/4"	(BENT)
	p169	1	PL1/4"X6"	1'-6 1/8"	(BENT)

FIELD BOLTS

QTY	DESCRIPTION	LENGTH	REMARKS
10	3/4" Ø A325N BOLTS	0'-2"	w/NUT & WASHER

SHOP NOTES

REF. DRAWINGS: E2	All Pipe: A53 GR-B	U.N.O.
All Material: A36	All Rebar: A706	U.N.O.
All W-Flange: A992	All Headed Studs: A108	U.N.O.
All TS: A500 GR-B	Welds: E70XX	U.N.O.

BLUE PRINTS				BLUE PRINTS				BLUE PRINTS			
NO.	DATE	FOR		NO.	DATE	FOR		NO.	DATE	FOR	

APPROVAL/REVIEW AUTHORITY:
 PLEASE REVIEW THIS DRAWING CAREFULLY IT REPRESENT OUR INTERPRETATION OF THE INTENT OF THE CONTRACT DOCUMENTS, HOWEVER, THE STEEL FABRICATOR AND THE STRUCTURAL DETAILER ASSUMES NO RESPONSIBILITY FOR THE ACCURACY OF THE INFORMATION SHOWN ON THIS DRAWING. THIS IS THE RESPONSIBILITY OF THE BUYER.
 UNLESS NOTED TO THE CONTRARY ON THIS DRAWING WHEN IT IS RETURNED FROM APPROVAL, IT WILL BE ASSUMED THAT ALL INFORMATION SHOWN HEREIN HAS THE AFFIRMATION OF APPROVAL AUTHORITY.
 SUBSEQUENT CHANGED INFORMATION SHOWN ON THESE DRAWINGS AFTER FIRST SUBMISSION WILL BE CONSIDERED AS CONTRACT CHANGES.
 ADOPTED BY THE AMERICAN INSTITUTE OF STEEL CONSTRUCTION.

FOR FABRICATION

NO.	DESCRIPTION	DATE
1	For Fabrication	

ITEM	BEAM	DRAWN BY: JKV	
JOB	NORMS RESTAURANTS, LLC	DATE	
LOCATION	17904 LAKEWOOD BLVD BELLFLOWER, CA	CHECKD BY: JKS	
ARCH.	GEOFFREY B.LIM	DATE 06/16/17	
CONTR.	----	APPROVED	
ENGR.	McVEIGH & MANGUM		
JOB NO.	HOLE SIZE U.N.	FINISH	DRWG. NO.
--	13/16	1 S/C PRIM	B96

ONE ~ BEAM ~ B96