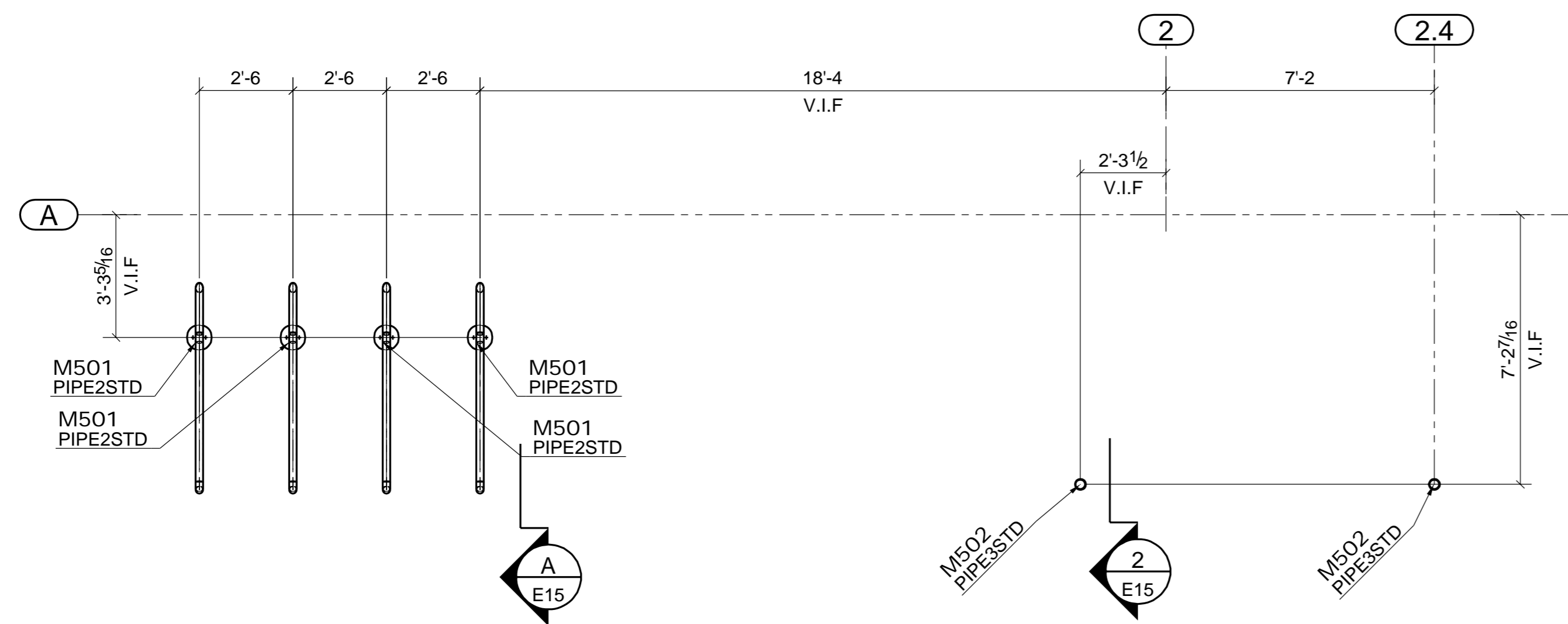


**GATE FRAMING PLAN**  
(REFER: -1/S1.3)

**APPROVER NOTE**

VERIFY ALL DIMENSION  
PRIOR TO FABRICATION



**BIKE RACK & BOLARD FRAMING PLAN**  
(REFER: -1 &2/ A3.1)

**FOR APPROVAL ONLY**

NO.	DESCRIPTION	DATE

BLUE PRINTS			BLUE PRINTS			BLUE PRINTS		
NO.	DATE	FOR	NO.	DATE	FOR	NO.	DATE	FOR

**APPROVAL/REVIEW AUTHORITY:**  
PLEASE REVIEW THIS DRAWING CAREFULLY IT REPRESENT OUR INTERPRETATION OF THE INTENT OF THE CONTRACT DOCUMENTS, HOWEVER, THE STEEL FABRICATOR AND THE STRUCTURAL DETAILER ASSUMES NO RESPONSIBILITY FOR THE ACCURACY OF THE INFORMATION SHOWN ON THIS DRAWING. THIS IS THE RESPONSIBILITY OF THE BUYER.  
UNLESS NOTED TO THE CONTRARY ON THIS DRAWING WHEN IT IS RETURNED FROM APPROVAL, IT WILL BE ASSUMED THAT ALL INFORMATION SHOWN HEREIN HAS THE AFFIRMATION OF APPROVAL AUTHORITY.  
SUBSEQUENT CHANGED INFORMATION SHOWN ON THESE DRAWINGS AFTER FIRST SUBMISSION WILL BE CONSIDERED AS CONTRACT CHANGES.  
ADOPTED BY THE AMERICAN INSTITUTE OF STEEL CONSTRUCTION.

ITEM	GATE FRAMING PLAN	DRAWN BY: MLA	
JOB	NORMS RESTAURANTS, LLC	DATE	
LOCATION	17904 LAKEWOOD BLVD BELLFLOWER, CA	CHECKD BY: SLF	
ARCH.	GEOFFREY B.LIM	DATE 06/30/17	
CONTR.	----	APPROVED	
ENGR.	MCVEIGH & MANGUM		
JOB NO.	HOLE SIZE U.N.	FINISH	DRWG. NO.
--	13/16	1 S/C PRIM	E14