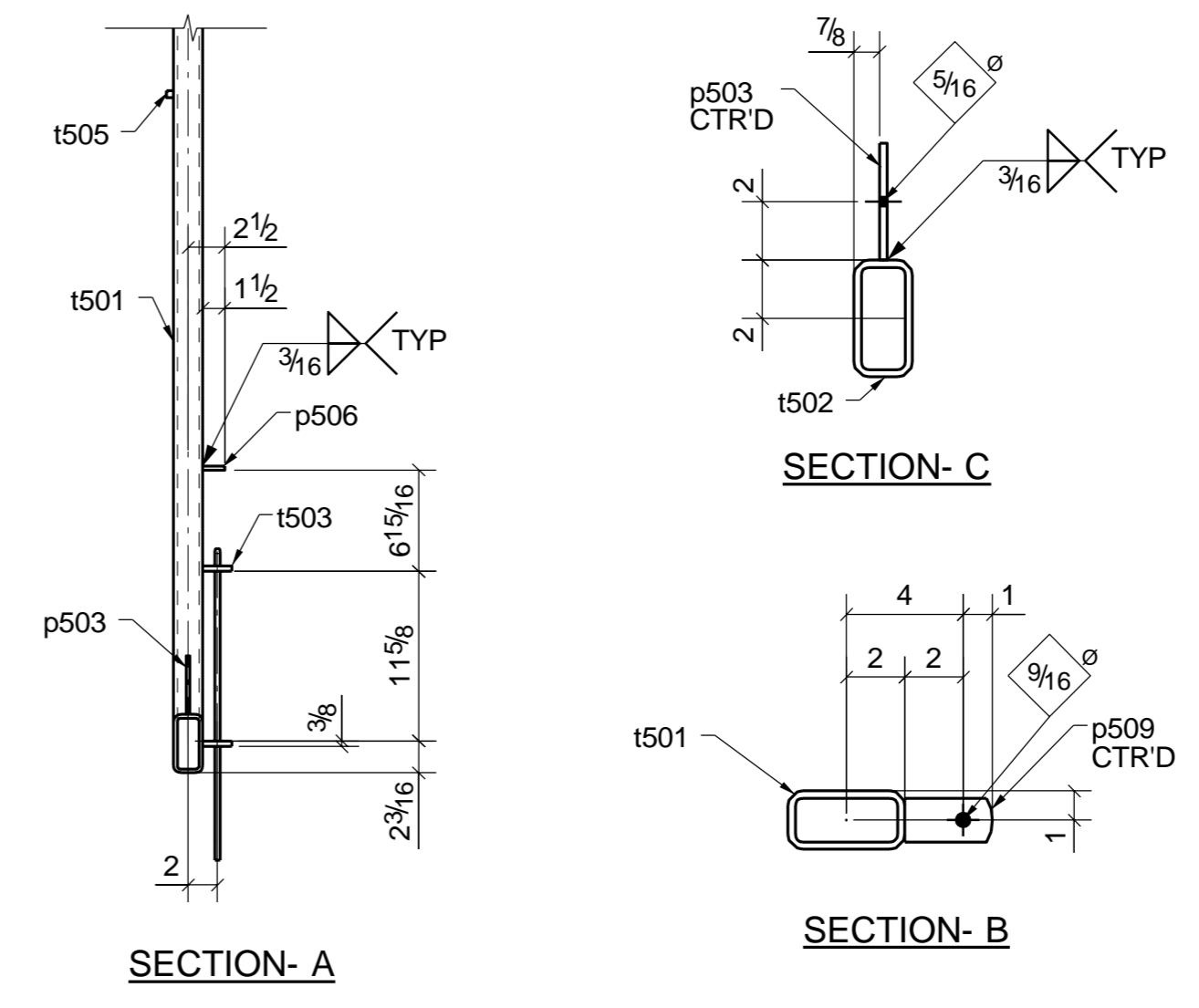
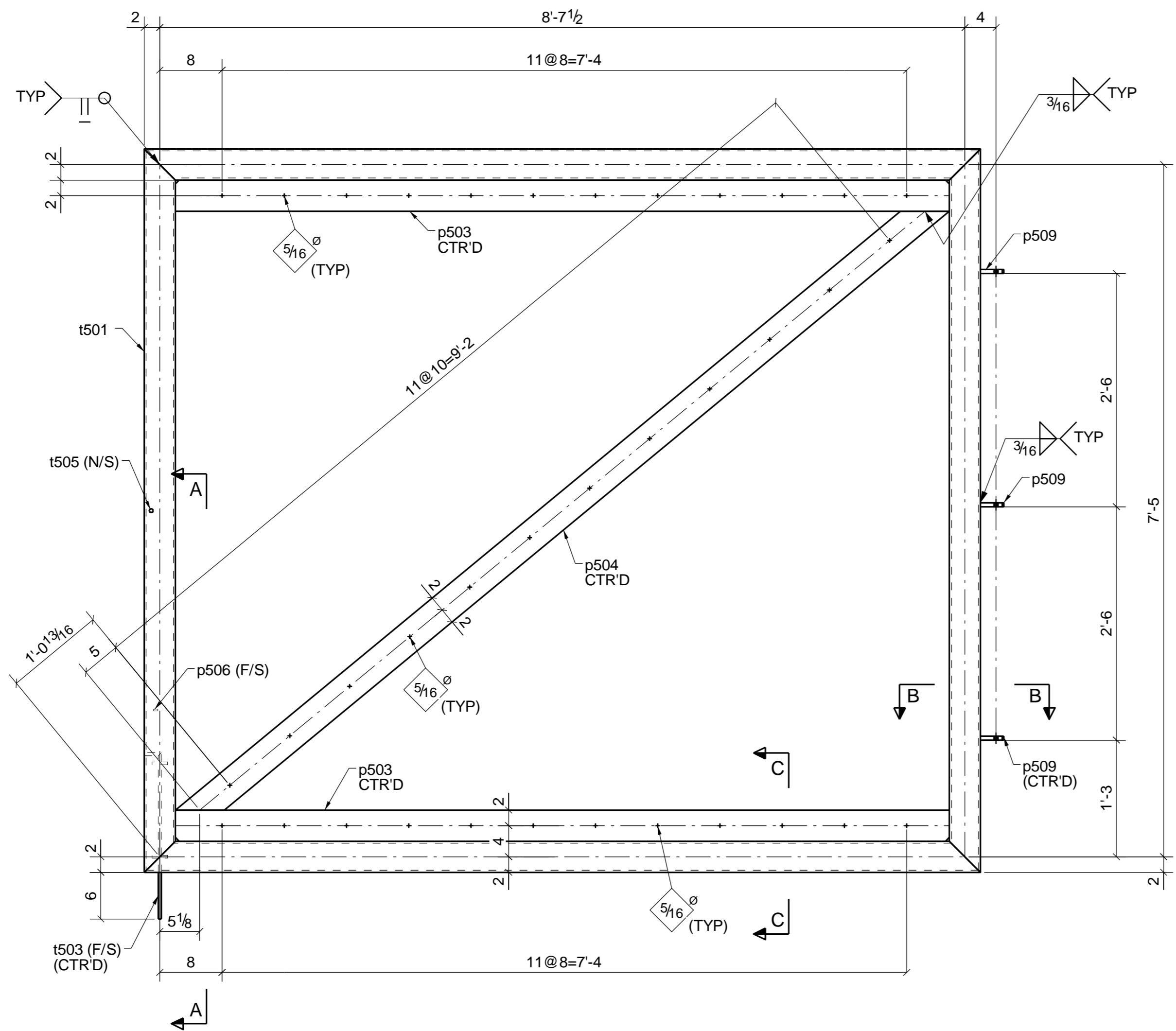


BILL OF MATERIAL					
SHIP MARK	PIECE MARK	QTY	DESCRIPTION	LENGTH	REMARKS
G502		1	GATE		
	G502	1	HSS4X2X1/4	8'-11 1/2"	
	p503	2	FL1/4"X4"	8'-3 1/2"	
	p504	1	FL1/4"X4"	10'-5 3/4"	
	p506	1	FL1/4"X1/2"	0'-1 1/2"	
	p509	3	FL1/2"X1 1/2"	0'-3"	
	t501	2	HSS4X2X1/4	7'-9"	
	t502	1	HSS4X2X1/4	8'-11 1/2"	
	t503	1	RB3/8"	1'-11 3/16"	
	t505	1	RB1/2"	0'-0 1/2"	

FIELD BOLTS			
QTY	DESCRIPTION	LENGTH	REMARKS



SHOP NOTES							
REF. DRAWINGS: E15		All Pipe: A53 GR-B		U.N.O.			
All Material: A36		U.N.O.		All Rebar: A706		U.N.O.	
All W-Flange: A992		U.N.O.		All Headed Studs: A108		U.N.O.	
All TS: A500 GR-B		U.N.O.		Welds: E70XX		U.N.O.	
BLUE PRINTS		BLUE PRINTS		BLUE PRINTS			
NO.	DATE	FOR	NO.	DATE	FOR	NO.	DATE

FOR APPROVAL ONLY

NO.	DESCRIPTION	DATE

APPROVAL/REVIEW AUTHORITY:
PLEASE REVIEW THIS DRAWING CAREFULLY IT REPRESENT OUR INTERPRETATION OF THE INTENT OF THE CONTRACT DOCUMENTS, HOWEVER, THE STEEL FABRICATOR AND THE STRUCTURAL DETAILER ASSUMES NO RESPONSIBILITY FOR THE ACCURACY OF THE INFORMATION SHOWN ON THIS DRAWING. THIS IS THE RESPONSIBILITY OF THE BUYER.
UNLESS NOTED TO THE CONTRARY ON THIS DRAWING WHEN IT IS RETURNED FROM APPROVAL, IT WILL BE ASSUMED THAT ALL INFORMATION SHOWN HEREIN HAS THE AFFIRMATION OF APPROVAL AUTHORITY.
SUBSEQUENT CHANGED INFORMATION SHOWN ON THESE DRAWINGS AFTER FIRST SUBMISSION WILL BE CONSIDERED AS CONTRACT CHANGES.
ADOPTED BY THE AMERICAN INSTITUTE OF STEEL CONSTRUCTION.

ITEM	GATE	DRAWN BY: JKV	
JOB	NORMS RESTAURANTS, LLC	DATE	
LOCATION	17904 LAKEWOOD BLVD BELLFLOWER, CA	CHECKD BY: JKS	
ARCH.	GEOFFREY B.LIM	DATE 06/30/17	
CONTR.	----	APPROVED	
ENGR.	MCVEIGH & MANGUM		
JOB NO.	HOLE SIZE U.N.	FINISH	DRWG. NO.
--	13/16	NO PAINT	G502

ONE - GATE - G502