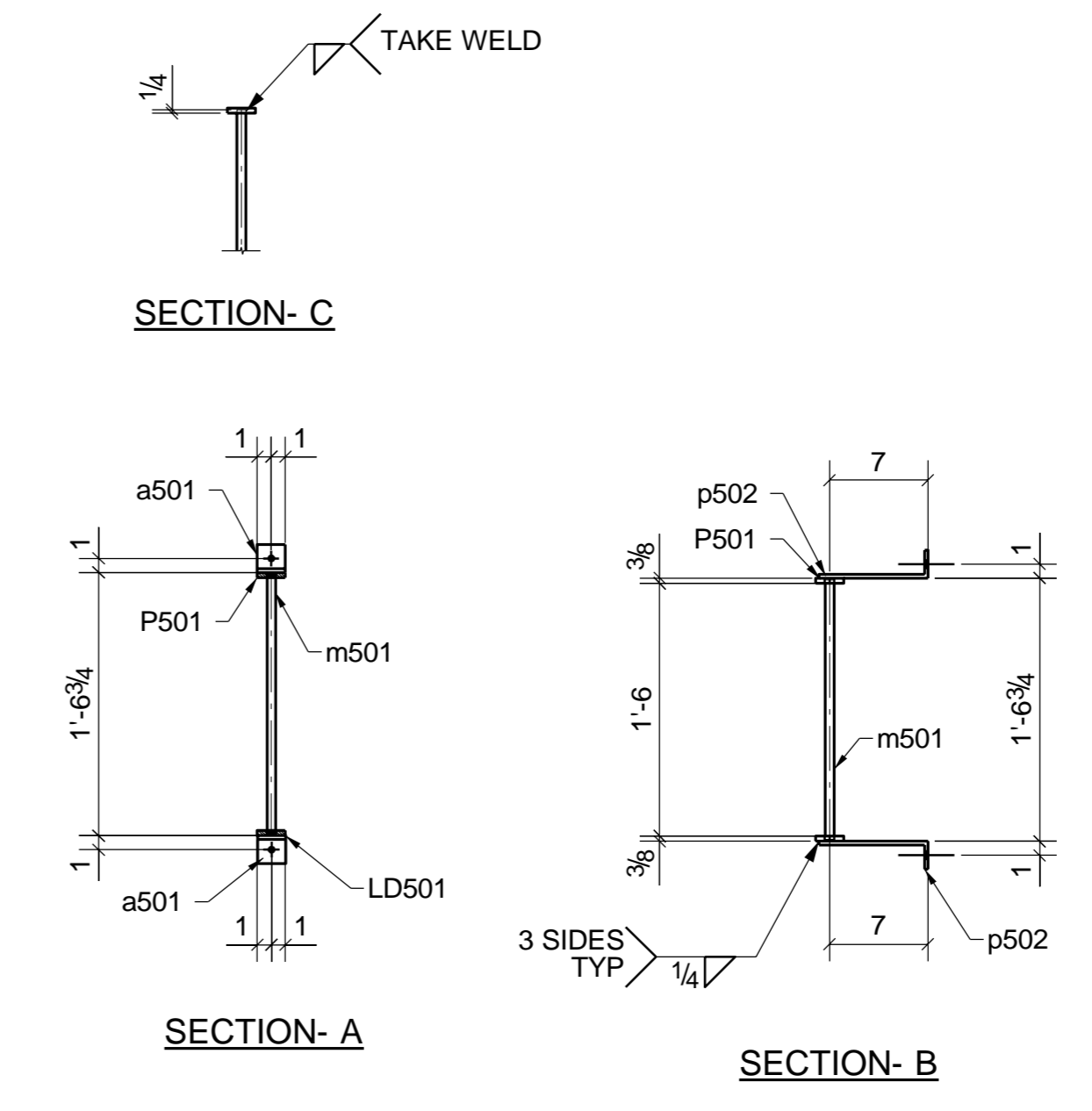
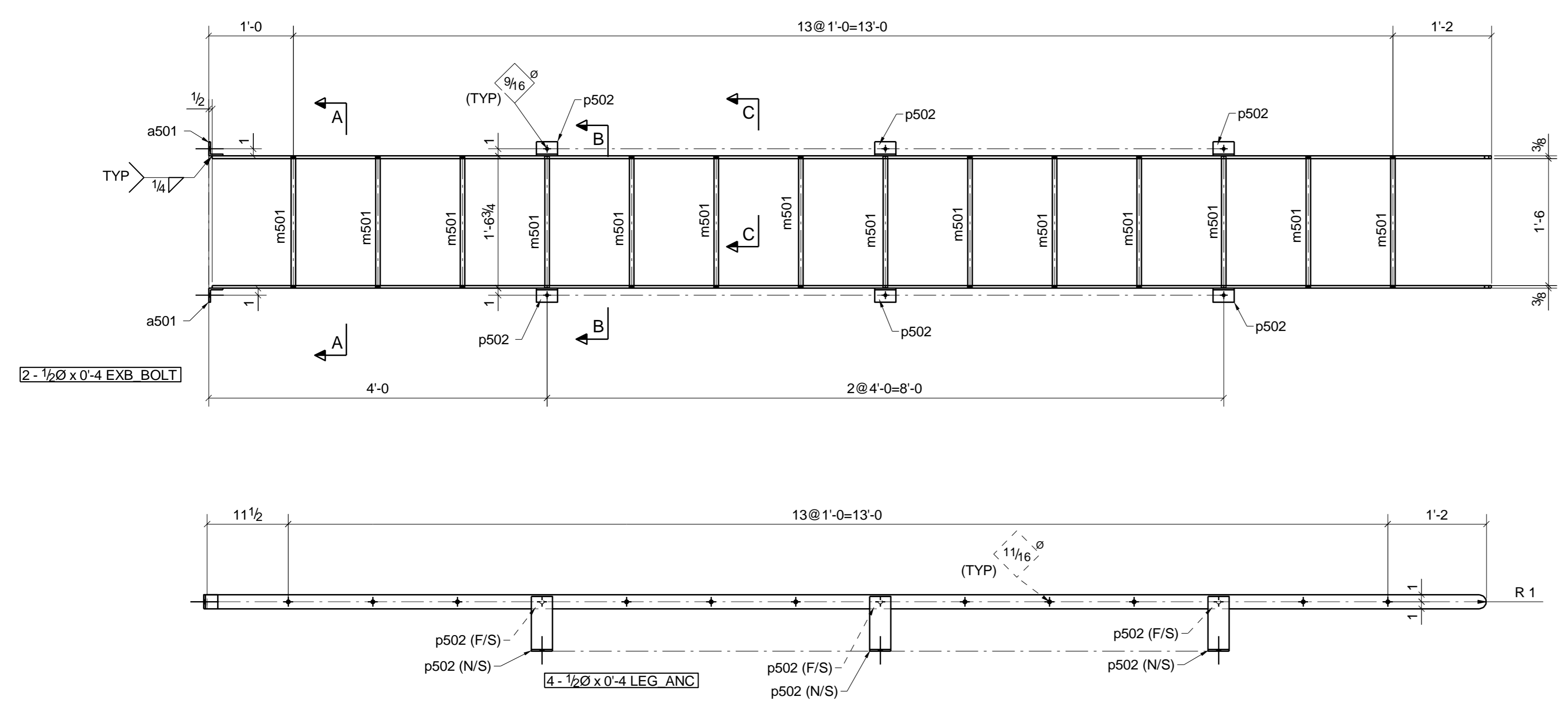


BILL OF MATERIAL					
SHIP MARK	PIECE MARK	QTY	DESCRIPTION	LENGTH	REMARKS
LD501		1	LADDER		
	LD501	1	FL3/8"X2"	15'-1 7/16"	
	P501	1	FL3/8"X2"	15'-1 7/16"	
	a501	2	L2X2X1/4	0'-2"	
	m501	14	ROD 5/8	1'-6 1/2"	
	p502	6	FL1/4"X3"	0'-9 1/4"	(BENT) (A53)

FIELD BOLTS			
QTY	DESCRIPTION	LENGTH	REMARKS
2	1/2" Ø EXB_BOLT BOLTS	0'-4"	w/NUT & WASHER
6	1/2" Ø LEG_ANC BOLTS	0'-4"	w/NUT & WASHER



**SHOP NOTES**

REF. DRAWINGS: E10	All Pipe: A53 GR-B	U.N.O.
All Material: A36	All Rebar: A706	U.N.O.
All W-Flange: A992	All Headed Studs: A108	U.N.O.
All TS: A500 GR-B	Welds: E70XX	U.N.O.

**APPROVAL/REVIEW AUTHORITY:**  
PLEASE REVIEW THIS DRAWING CAREFULLY IT REPRESENT OUR INTERPRETATION OF THE INTENT OF THE CONTRACT DOCUMENTS, HOWEVER, THE STEEL FABRICATOR AND THE STRUCTURAL DETAILER ASSUMES NO RESPONSIBILITY FOR THE ACCURACY OF THE INFORMATION SHOWN ON THIS DRAWING. THIS IS THE RESPONSIBILITY OF THE BUYER.  
UNLESS NOTED TO THE CONTRARY ON THIS DRAWING WHEN IT IS RETURNED FROM APPROVAL, IT WILL BE ASSUMED THAT ALL INFORMATION SHOWN HEREIN HAS THE AFFIRMATION OF APPROVAL AUTHORITY.  
SUBSEQUENT CHANGED INFORMATION SHOWN ON THESE DRAWINGS AFTER FIRST SUBMISSION WILL BE CONSIDERED AS CONTRACT CHANGES.  
ADOPTED BY THE AMERICAN INSTITUTE OF STEEL CONSTRUCTION.

**FOR APPROVAL ONLY**

NO.	DESCRIPTION	DATE

ITEM	LADDER	DRAWN BY: JKV
JOB	NORMS RESTAURANTS, LLC	DATE
LOCATION	17904 LAKEWOOD BLVD BELLFLOWER, CA	CHECKD BY: JKS
ARCH.	GEOFFREY B.LIM	DATE 06/30/17
CONTR.	----	APPROVED
ENGR.	MCVEIGH & MANGUM	

JOB NO.	HOLE SIZE U.N.	FINISH	DRWG. NO.
--	13/16	1 S/C PRIM	LD501

ONE ~ LADDER ~ LD501