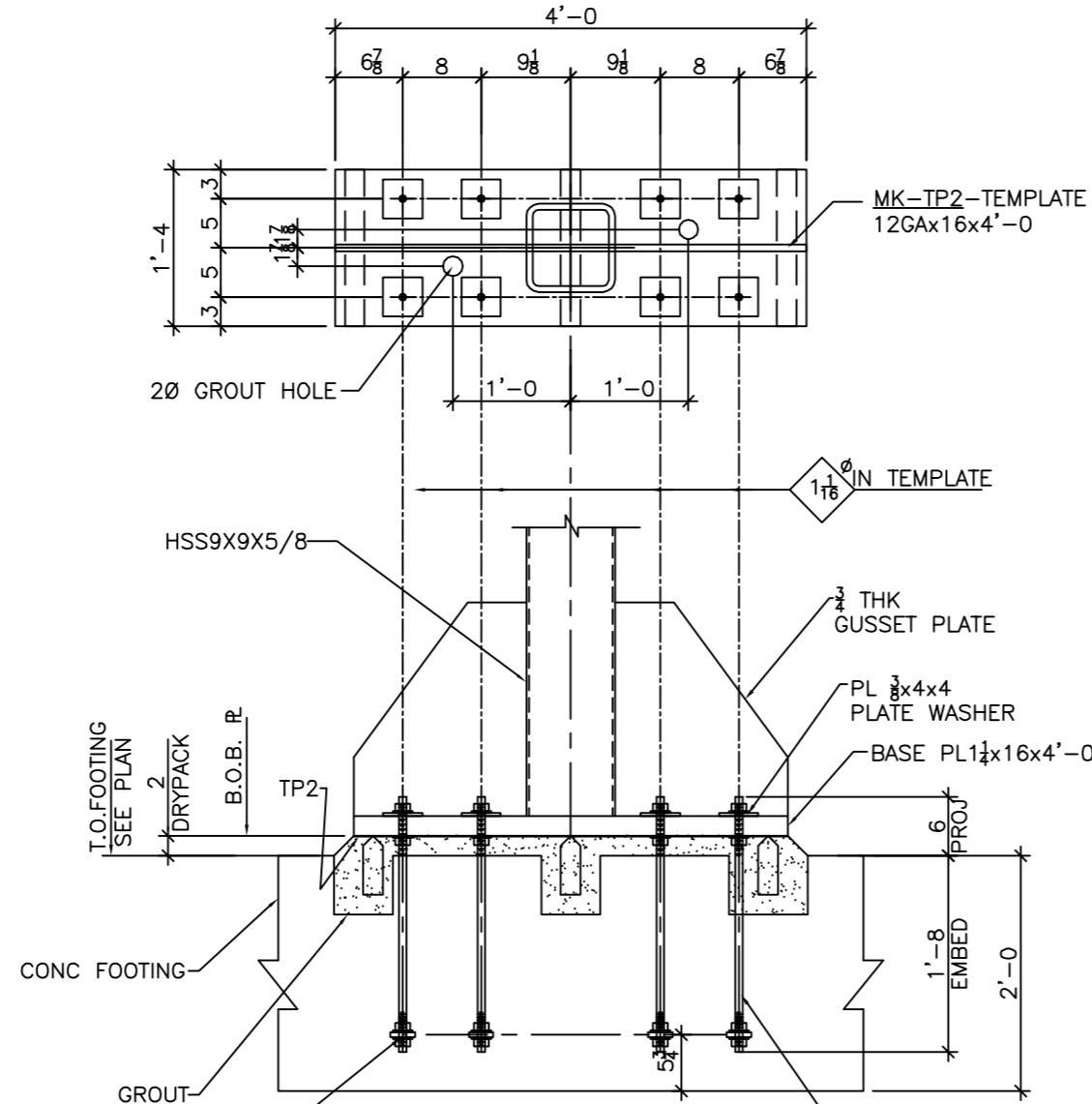


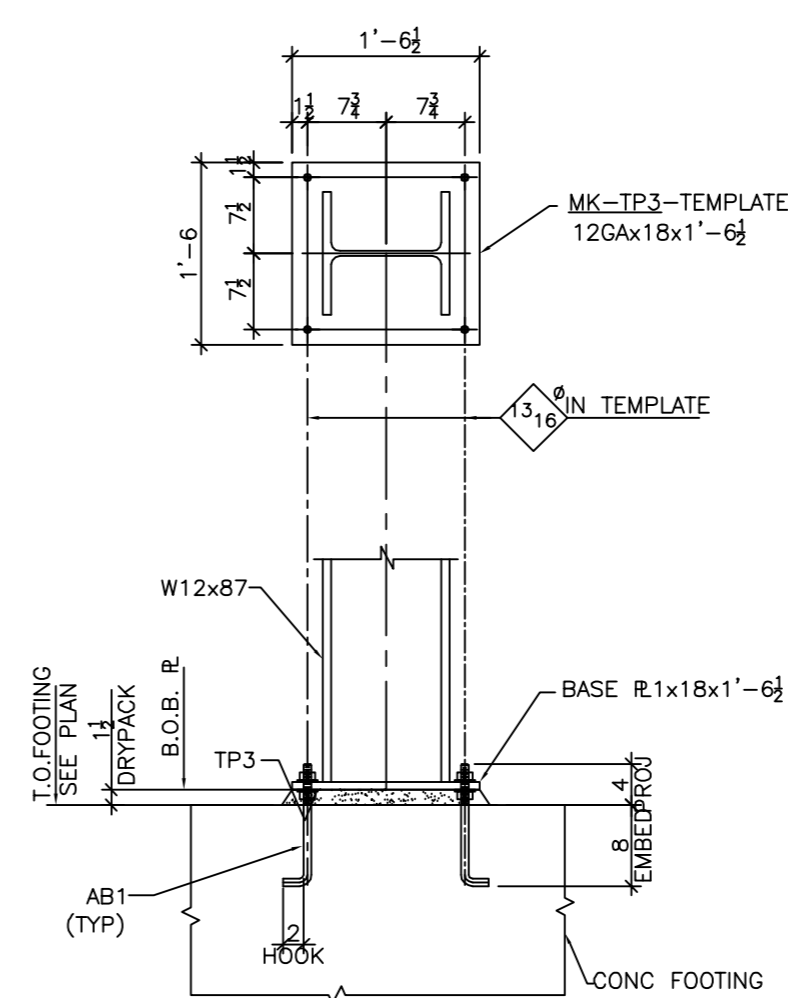
DETAIL-A (2 LOC.)
(2 @ ABP1) (REF: 9/10/SD1)

4-3/4" x 1'-0" ASTM F1554, GR55
J ANCHOR BOLTS
w/ 2 NUT & STD WASHER PER MK:-AB1.
TEMPLATE 12GAx16x1'-4 MK:-TP1



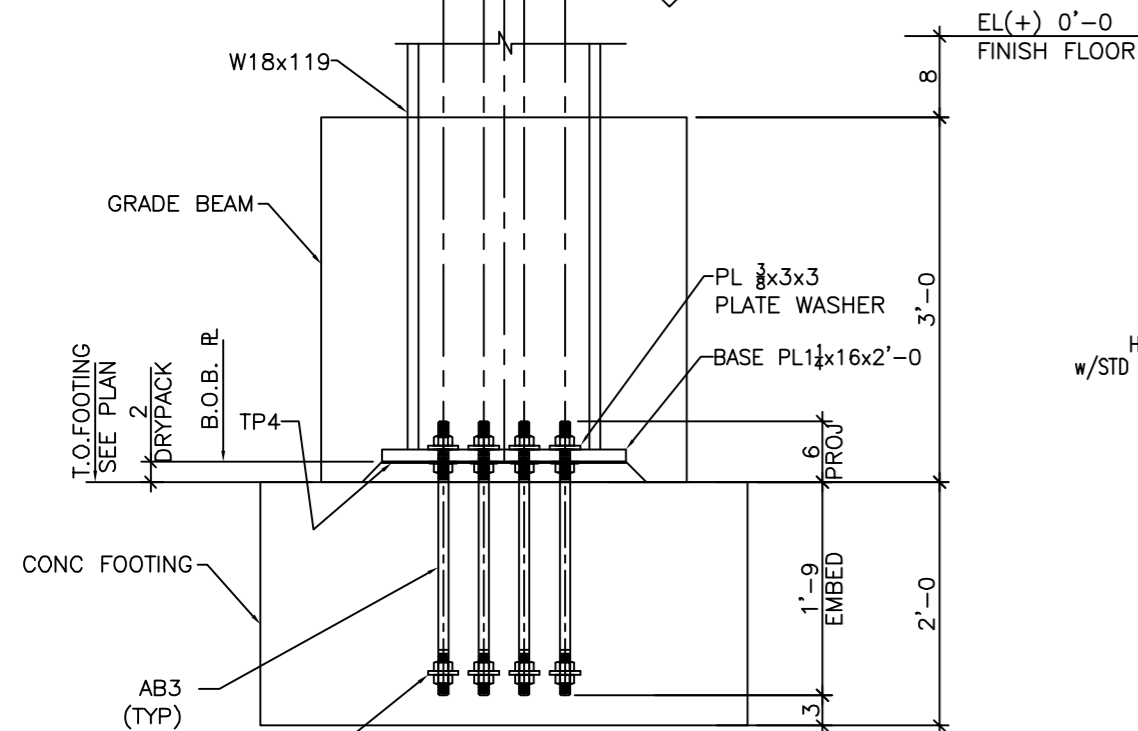
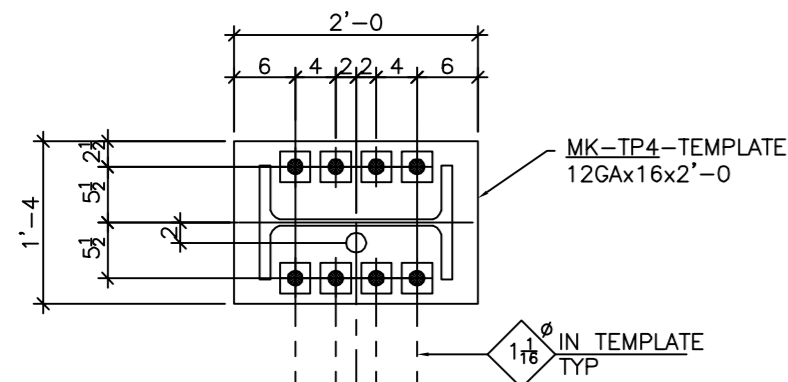
DETAIL-B (2 LOC.)
(2 @ ABP1) (REF: 1/SD8)
(ORIENTATION PER PLAN) (REF: B/SS)
(REF: SD9)

4-1" x 2'-2" ASTM F1554, GR55
THREADED ROD ANCHOR BOLTS
w/ 4 NUT & PLATE WASHER PER MK:-AB2.
TEMPLATE 12GAx16x4'-0 MK:-TP2



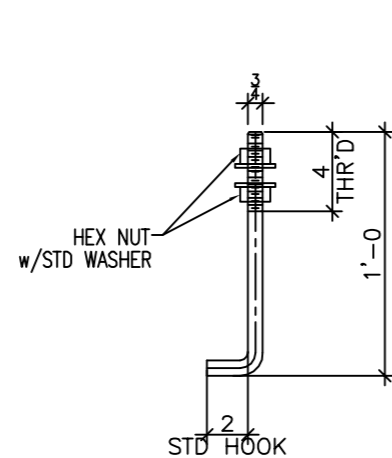
DETAIL-C (5 LOC.)
(5 @ ABP1) (REF: 9/SD1)
(ORIENTATION PER PLAN)

4-3/4" x 1'-0" ASTM F1554, GR55
J ANCHOR BOLTS
w/ 2 NUT & STD WASHER PER MK:-AB1.
TEMPLATE 12GAx18x1'-6 1/2 MK:-TP3

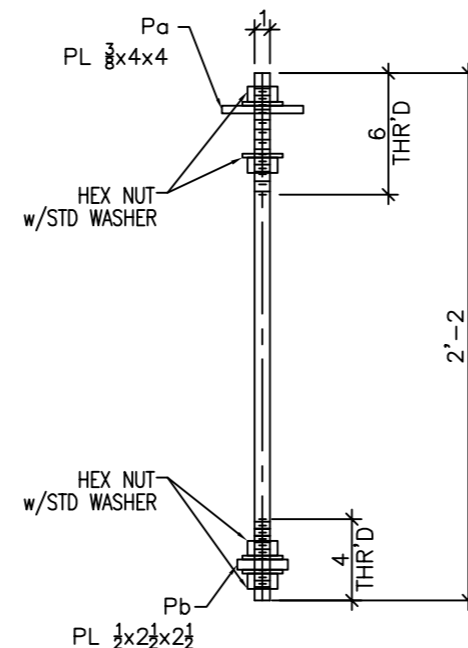


DETAIL-D (4 LOC.)
(4 @ ABP1) (REF: 1/SD1)
(ORIENTATION PER PLAN) (REF: A/SD4)

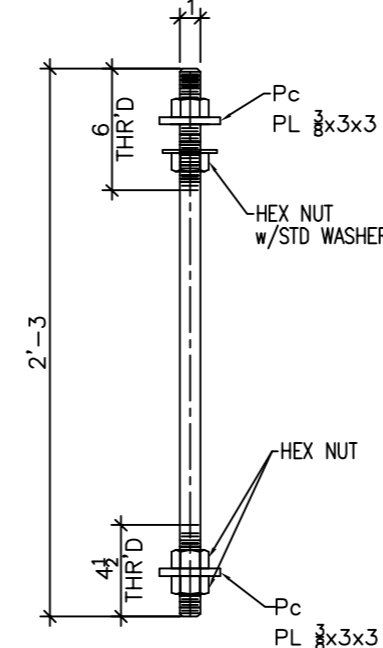
8-1" x 2'-3" ASTM F1554, GR55
THREADED ROD ANCHOR BOLTS
w/ 4 NUT & PLATE WASHER PER MK:-AB3.
TEMPLATE 12GAx16x2'-0 MK:-TP4



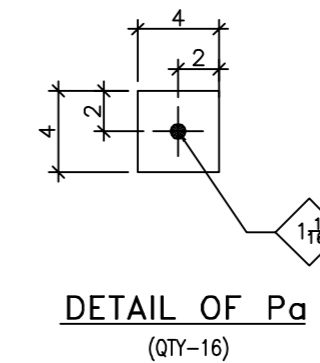
DETAIL OF AB1
(QTY-40)



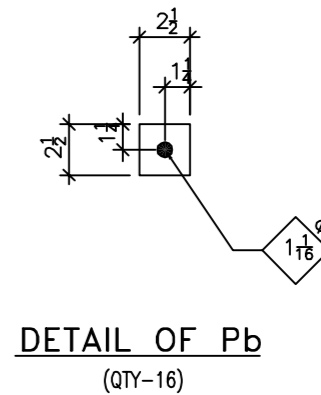
DETAIL OF AB2
(QTY-16)



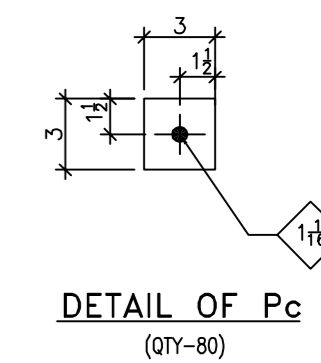
DETAIL OF AB3
(QTY-40)



DETAIL OF Pa
(QTY-16)



DETAIL OF Pb
(QTY-16)



DETAIL OF Pc
(QTY-80)

TEMPLATES		
MARK.	QTY.	DESCRIPTION
TP1	2	12GAx16x1'-4
TP2	2	12GAx16x4'-0
TP3	5	12GAx18x1'-6 1/2
TP4	4	12GAx16x2'-0
TP5	2	12GAx16x2'-0
TP6	3	12GAx13 x1'-1

PLATE WASHER		
MARK.	QTY.	DESCRIPTION
Pa	16	PL 3/4x4'-4
Pb	16	PL 1/2x2'-2
Pc	80	PL 3/8x3'-3

ANCHOR BOLTS			
MARK.	QTY.	DESCRIPTION	GRADE
AB1	40	3/4" x 1'-0" J ANCHOR BOLT w/2 NUTS & WASHER	ASTM (F1554 GR.55)
AB2	16	1" x 2'-2" THREADED ROD ANCHOR BOLT w/4 NUTS & WASHER	ASTM (F1554 GR.55)
AB3	40	1" x 2'-3" THREADED ROD ANCHOR BOLT w/4 NUTS & WASHER	ASTM (F1554 GR.55)

FOR FIELD USE		
NO.	DESCRIPTION	DATE
	ISSUED FOR FIELD USE	08/07/17
	ISSUED FOR APPROVAL	06/20/17

BLUE PRINTS			BLUE PRINTS			BLUE PRINTS		
NO.	DATE	FOR	NO.	DATE	FOR	NO.	DATE	FOR

APPROVAL/REVIEW AUTHORITY:
PLEASE REVIEW THIS DRAWING CAREFULLY IT REPRESENT OUR INTERPRETATION OF THE INTENT OF THE CONTRACT DOCUMENTS, HOWEVER, THE STEEL FABRICATOR AND THE STRUCTURAL DETAILER ASSUMES NO RESPONSIBILITY FOR THE ACCURACY OF THE INFORMATION SHOWN ON THIS DRAWING. THIS IS THE RESPONSIBILITY OF THE BUYER.
UNLESS NOTED TO THE CONTRARY ON THIS DRAWING WHEN IT IS RETURNED FROM APPROVAL, IT WILL BE ASSUMED THAT ALL INFORMATION SHOWN HEREIN HAS THE AFFIRMATION OF APPROVAL AUTHORITY.
SUBSEQUENT CHANGED INFORMATION SHOWN ON THESE DRAWINGS AFTER FIRST SUBMISSION WILL BE CONSIDERED AS CONTRACT CHANGES.
ADOPTED BY THE AMERICAN INSTITUTE OF STEEL CONSTRUCTION.

ITEM	ANCHOR BOLT DETAILS	DRAWN BY: MAE	
JOB	H&M	DATE 06/16/17	
LOCATION	US183 VICTORIA GARDEN T.I	CHECKED BY: FIM	
ARCH.	LDA DESIGN GROUP INC,	DATE 06/16/17	
CONTR.	.	APPROVED	
ENGR.	HSA & ASSOCIATES INC,	.	
JOB NO.	HOLE SIZE U.N.	FINISH	DRWG. NO.
.	13/16"	--	ABP2