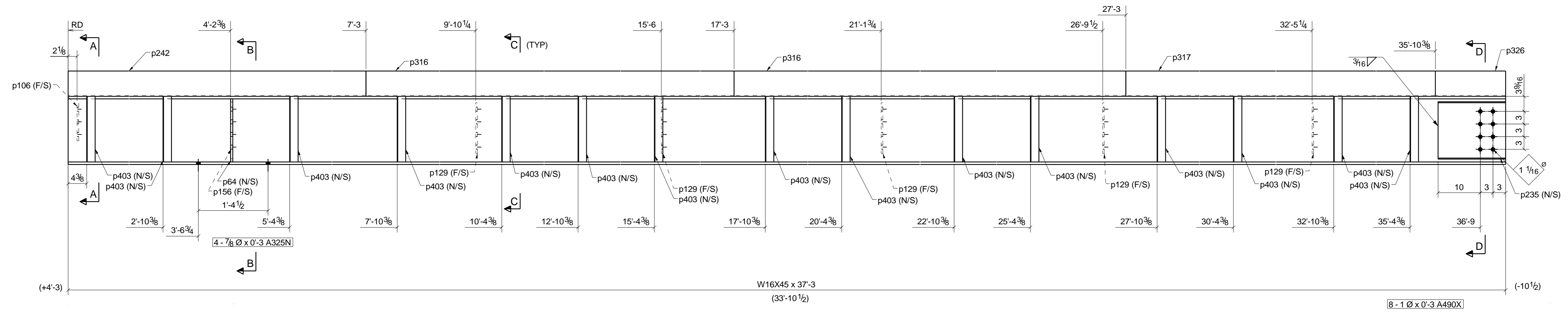
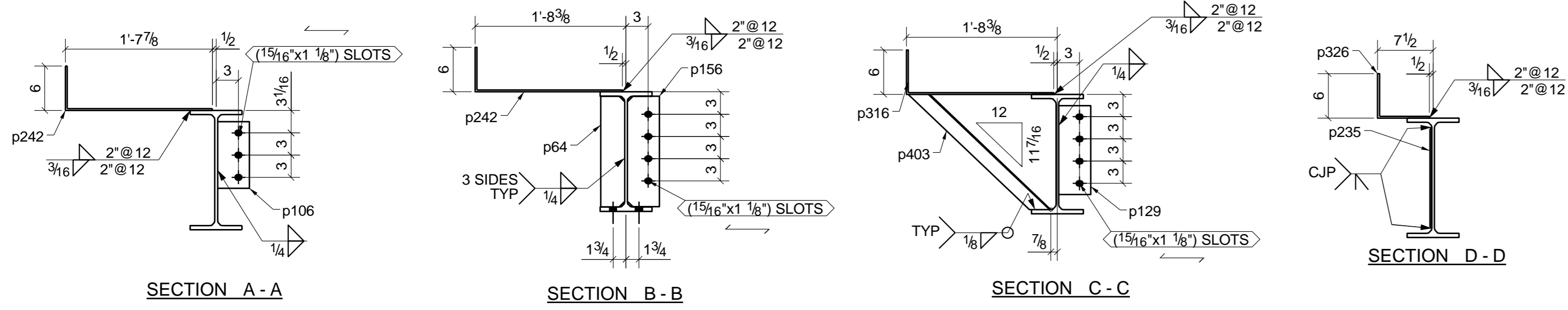


BILL OF MATERIAL					
SHIP MARK	PIECE MARK	QTY	DESCRIPTION	LENGTH	REMARKS
B33		1	BEAM		
	B33	1	W16X45	37'-3"	
	p64	1	FL1/2"X3 1/4"	1'-2 15/16"	
	p106	1	PL3/8"X4 5/16"	0'-9"	
	p129	5	PL3/8"X4 5/16"	1'-0"	
	p156	1	PL1/2"X4 5/16"	1'-2 15/16"	
	p235	1	PL1/4"X13 5/8"	1'-4"	(A572-GR.50)
	p242	1	BPL1/4"X25 3/8"	7'-3"	(BENT)
	p316	2	BPL1/4"X25 3/8"	10'-0"	(BENT)
	p317	1	BPL1/4"X25 3/8"	8'-7 3/8"	(BENT)
	p326	1	BPL1/4"X12 1/2"	1'-4 5/8"	(BENT)
	p403	15	L2X2X1/8	2'-0 11/16"	

FIELD BOLTS			
QTY	DESCRIPTION	LENGTH	REMARKS
4	7/8" Ø A325N BOLTS	0'-3"	w/NUT & WASHER
8	1" Ø A490X BOLTS	0'-3"	w/NUT & WASHER



- NOTES:-
- 1). NO PAINT 3" AROUND HOLES.
 - 2). HATCH INDICATES NO PAINT AREA.
 - 3). N.P DENOTES NO PAINT.
 - 4). NO PAINT AT TOP SURFACE OF BEAM.

SHOP NOTES							
REF. DRAWINGS:	E8	All Pipe:	A53	U.N.O.			
All Material:	A36	U.N.O.	All Rebar:	A706	U.N.O.		
All W-Flange:	A992	U.N.O.	All Headed Studs:	A108	U.N.O.		
All TS:	A500 GR-B	U.N.O.	Welds:	E70XX	U.N.O.		
BLUE PRINTS		BLUE PRINTS		BLUE PRINTS			
NO.	DATE	FOR	NO.	DATE	FOR	NO.	DATE

FOR FABRICATION

NO.	DESCRIPTION	DATE
1	For Fabrication	

APPROVAL/REVIEW AUTHORITY:
PLEASE REVIEW THIS DRAWING CAREFULLY IT REPRESENT OUR INTERPRETATION OF THE INTENT OF THE CONTRACT DOCUMENTS, HOWEVER, THE STEEL FABRICATOR AND THE STRUCTURAL DETAILER ASSUMES NO RESPONSIBILITY FOR THE ACCURACY OF THE INFORMATION SHOWN ON THIS DRAWING. THIS IS THE RESPONSIBILITY OF THE BUYER.
UNLESS NOTED TO THE CONTRARY ON THIS DRAWING WHEN IT IS RETURNED FROM APPROVAL, IT WILL BE ASSUMED THAT ALL INFORMATION SHOWN HEREIN HAS THE AFFIRMATION OF APPROVAL AUTHORITY.
SUBSEQUENT CHANGED INFORMATION SHOWN ON THESE DRAWINGS AFTER FIRST SUBMISSION WILL BE CONSIDERED AS CONTRACT CHANGES.
ADOPTED BY THE AMERICAN INSTITUTE OF STEEL CONSTRUCTION.

ITEM	BEAM	DRAWN BY:	BSS
JOB	H&M	DATE	
LOCATION	US183 VICTORIA GARDEN	CHECKD BY:	SLF
ARCH.	LDA DESIGN GROUP INC.	DATE	07/04/17
CONTR.	--	APPROVED	
ENGR.	HSA & ASSOCIATES INC,		
JOB NO.	--	HOLE SIZE U.N.	15/16
		FINISH	STD SHOP
		DRWG. NO.	B33

ONE ~ BEAM ~ B33