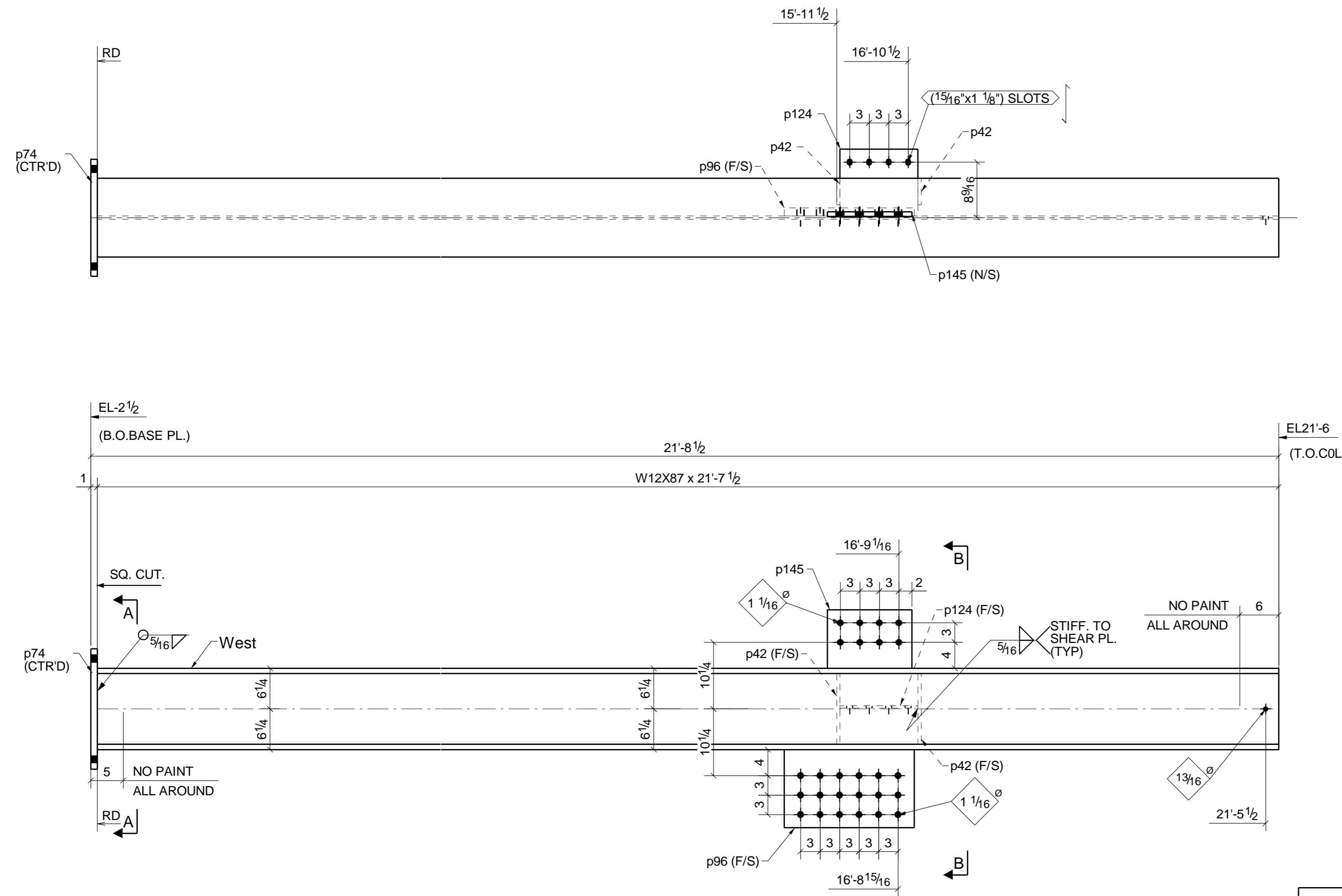


BILL OF MATERIAL

SHIP MARK	PIECE MARK	QTY	DESCRIPTION	LENGTH	REMARKS
C30		1	COLUMN		
	C30	1	W12X87	21'-7 1/2"	
	p42	2	PL1/2"X4 1/16"	0'-10 13/16"	
	p74	1	PL1"X18"	1'-6 1/2"	(A572-GR.50)
	p96	1	PL1 1/4"X12"	1'-8"	(A572-GR.50)
	p124	1	PL3/8"X10 5/16"	1'-0"	
	p145	1	FL3/4"X9"	1'-1"	(A572-GR.50)

FIELD BOLTS

QTY	DESCRIPTION	LENGTH	REMARKS



NO PAINT ALL AROUND 3" OF HOLE

ONE ~ COLUMN ~ C30

SHOP NOTES

REF. DRAWINGS: ONE @ E2	All Pipe: A53	U.N.O.
All Material: A36	All Rebar: A706	U.N.O.
All W-Flange: A992	All Headed Studs: A108	U.N.O.
All TS: A500 GR-B	Welds: E70XX	U.N.O.

BLUE PRINTS				BLUE PRINTS				BLUE PRINTS			
NO.	DATE	FOR		NO.	DATE	FOR		NO.	DATE	FOR	

APPROVAL/REVIEW AUTHORITY:
 PLEASE REVIEW THIS DRAWING CAREFULLY IT REPRESENT OUR INTERPRETATION OF THE INTENT OF THE CONTRACT DOCUMENTS, HOWEVER, THE STEEL FABRICATOR AND THE STRUCTURAL DETAILER ASSUMES NO RESPONSIBILITY FOR THE ACCURACY OF THE INFORMATION SHOWN ON THIS DRAWING. THIS IS THE RESPONSIBILITY OF THE BUYER.

UNLESS NOTED TO THE CONTRARY ON THIS DRAWING WHEN IT IS RETURNED FROM APPROVAL, IT WILL BE ASSUMED THAT ALL INFORMATION SHOWN HEREIN HAS THE AFFIRMATION OF APPROVAL AUTHORITY.

SUBSEQUENT CHANGED INFORMATION SHOWN ON THESE DRAWINGS AFTER FIRST SUBMISSION WILL BE CONSIDERED AS CONTRACT CHANGES.

ADOPTED BY THE AMERICAN INSTITUTE OF STEEL CONSTRUCTION.

FOR FABRICATION

1	For Fabrication	
NO.	DESCRIPTION	DATE

ITEM	COLUMN	DRAWN BY: BSS
JOB	H&M	DATE

LOCATION	US183 VICTORIA GARDEN	CHECKD BY: SLF
ARCH.	LDA DESIGN GROUP INC.	DATE

CONTR.	--	APPROVED
ENGR.	HSA & ASSOCIATES INC,	

JOB NO.	HOLE SIZE U.N.	FINISH	DRWG. NO.
--	15/16	STD SHOP	C30