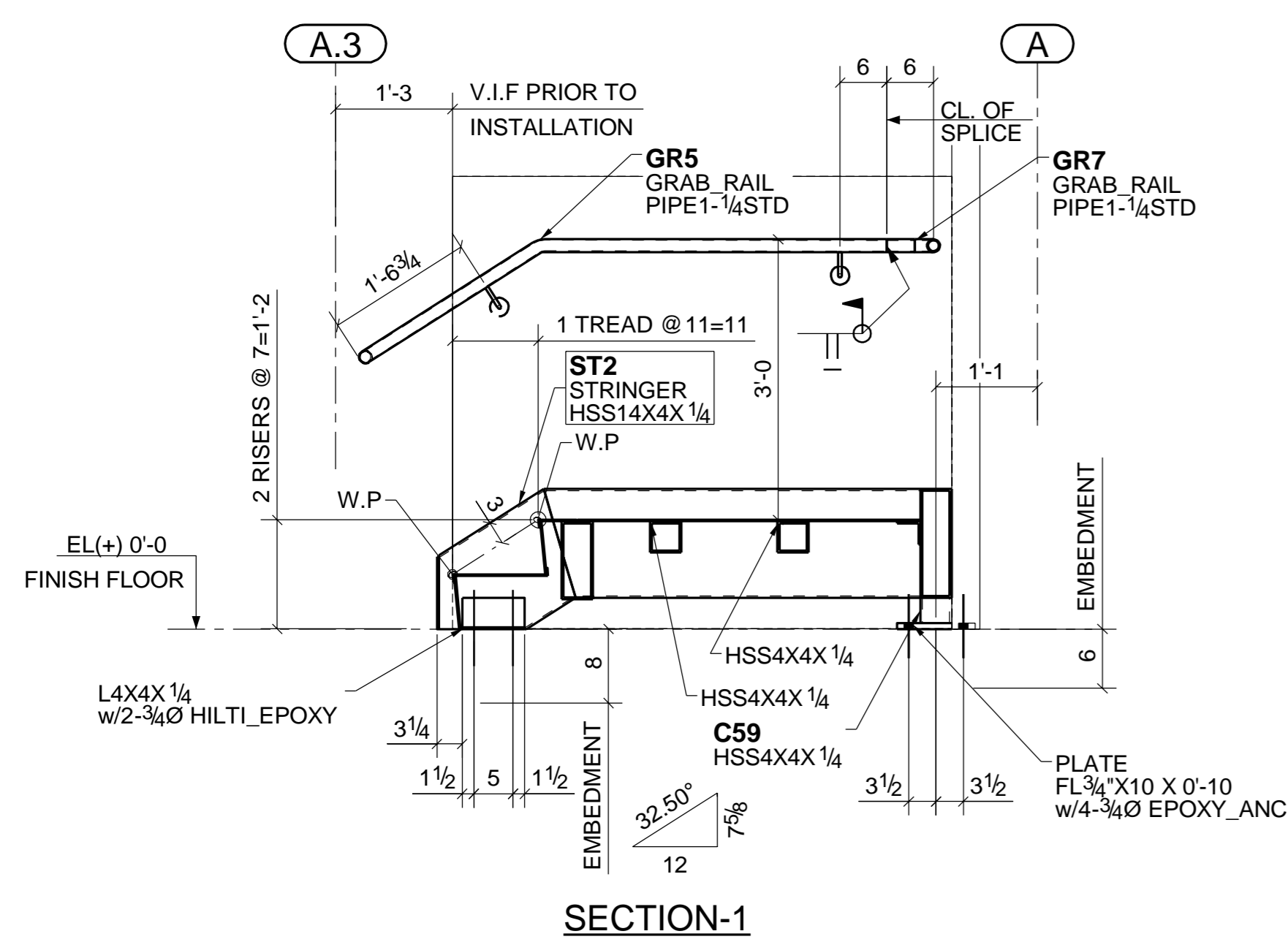
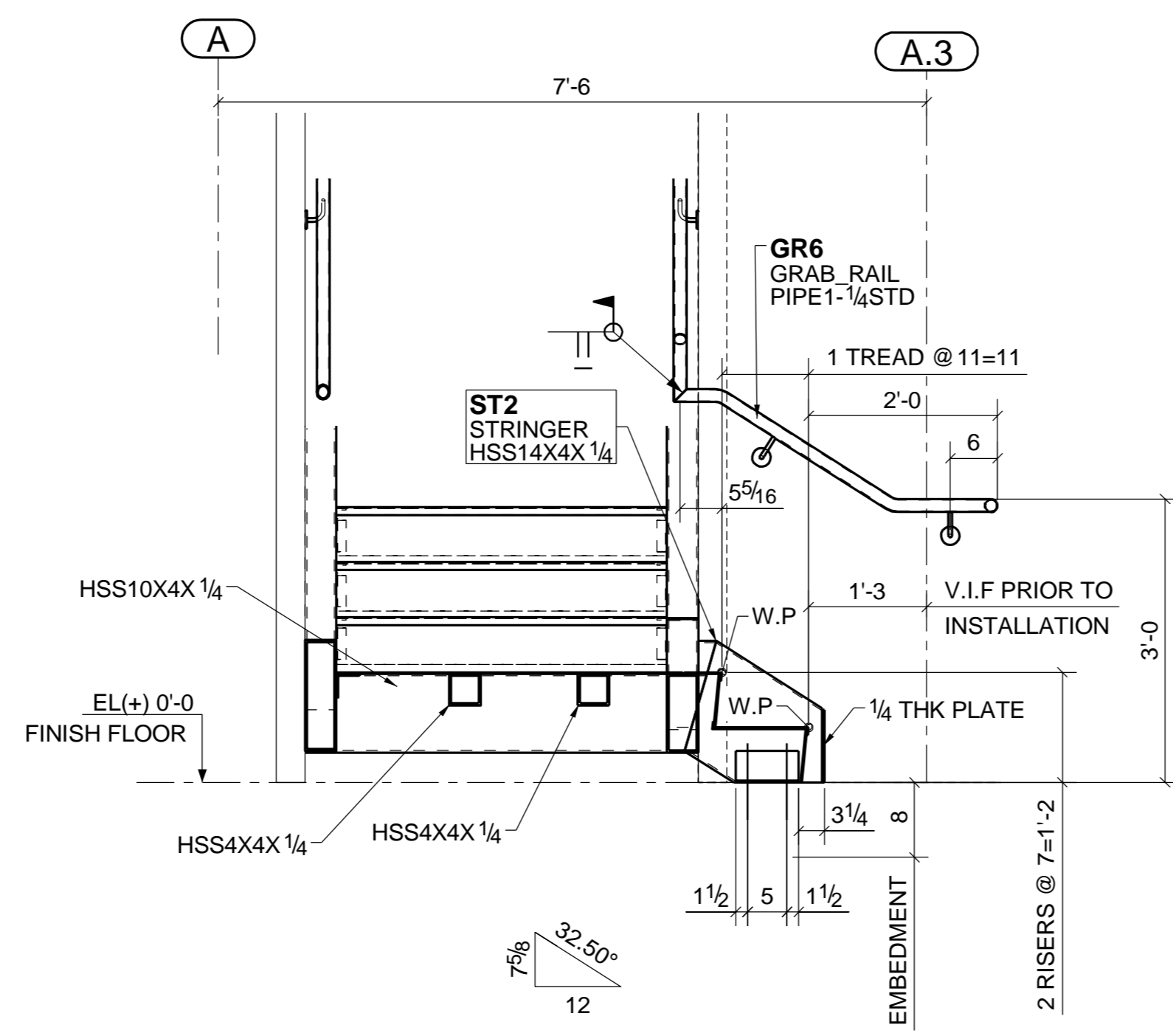


**STAIR#2 LAYOUT-FRAMING PLAN**  
(REF: B/SD13 & 4, 5 & 6/A900)



**SECTION-1**



**SECTION-2**

FOR FIELD USE		
NO.	DESCRIPTION	DATE
1	For Field Use	

BLUE PRINTS			
NO.	DATE	FOR	

**APPROVAL/REVIEW AUTHORITY:**  
PLEASE REVIEW THIS DRAWING CAREFULLY IT REPRESENT OUR INTERPRETATION OF THE INTENT OF THE CONTRACT DOCUMENTS, HOWEVER, THE STEEL FABRICATOR AND THE STRUCTURAL DETAILER ASSUMES NO RESPONSIBILITY FOR THE ACCURACY OF THE INFORMATION SHOWN ON THIS DRAWING. THIS IS THE RESPONSIBILITY OF THE BUYER.  
UNLESS NOTED TO THE CONTRARY ON THIS DRAWING WHEN IT IS RETURNED FROM APPROVAL, IT WILL BE ASSUMED THAT ALL INFORMATION SHOWN HEREIN HAS THE AFFIRMATION OF APPROVAL AUTHORITY.  
SUBSEQUENT CHANGED INFORMATION SHOWN ON THESE DRAWINGS AFTER FIRST SUBMISSION WILL BE CONSIDERED AS CONTRACT CHANGES.  
ADOPTED BY THE AMERICAN INSTITUTE OF STEEL CONSTRUCTION.

ITEM	STAIR#2 LAYOUT-FRAMING PLAN	DRAWN BY:		
JOB	H&M	DATE		
LOCATION	US183 VICTORIA GARDEN	CHECKD BY:		
ARCH.	LDA DESIGN GROUP INC.	DATE		
CONTR.	--	APPROVED		
ENGR.	HSA & ASSOCIATES INC,			
JOB NO.	--	HOLE SIZE U.N.	FINISH	DRWG. NO.
		15/16	STD SHOP	E31